



EAGLE G60 AS&E

HIGH-ENERGY GANTRY INSPECTION SYSTEM

- ▶ RELIABLE 6 MEV X-RAY IMAGING SYSTEM
- ▶ HIGH-QUALITY DUAL-ENERGY IMAGING FOR THE DETECTION OF EXPLOSIVES, WEAPONS, AND CONTRABAND
- ▶ MULTIPLE CONFIGURATIONS AND OPERATIONAL MODES THAT CATER TO VARIOUS APPLICATIONS

The high-energy X-ray, rail-mounted inspection system is ideal for inspection of dense cargo, verification of manifests, and identification of contraband at critical facilities, border crossings, and seaports.

The modular design of the Eagle G60 supports both gantry and portal mode operation, allowing for both the inspection of densely loaded containers and the safe screening of drive-through traffic.

The multiple levels of imaging performance create flexibility for customers to select the system configuration ideally suited for their unique requirements.

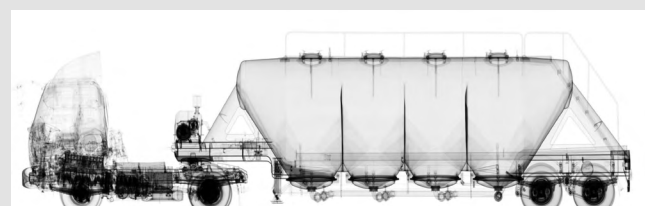
HEALTH AND SAFETY

- **Shielded radiation exclusion zone (in gantry mode ; 20 trucks per hour)**
54 m x 13.4 m (177 ft x 44 ft)
- **Radiation dose at exclusion zone boundary (in gantry mode)**
0.5 μ Sv in any one hour
- **Radiation dose to driver (in portal mode)**
Less than 0.25 QSv per scan
- **Radiation dose to crew**
0.5 μ Sv in any one hour
- **Radiation dose to cargo¹**
Less than 20 μ Sv per scan

¹ For G60-S, G60-T, G60-R configurations



THE INNOVATIVE DESIGN OF THE RAPISCAN EAGLE® G60 COMBINES HIGH-QUALITY IMAGING WITH OPERATIONAL FLEXIBILITY TO MEET CUSTOMERS' DIVERSE CARGO SCREENING REQUIREMENTS.



Rapiscan Eagle G60 high-energy transmission image



EAGLE G60

AS&E



TYPICAL GANTRY-MODE PERFORMANCE

	G60-S	G60-T	G60-R	G60-HP
Steel penetration	330 mm	360 mm	350 mm	380 mm
Wire resolution	1.2 mm	1.2 mm	1 mm	1.4 mm
Spatial resolution	4 mm (H) 4 mm (V)	4 mm (H) 4 mm (V)	3 mm (H) 3 mm (V)	5 mm (H) 5 mm (V)

OPERATING FEATURES

X-ray source	6 Mev
Crew	Scan coordinator and image analyst
Scan modes	Gantry mode and optional portal mode
Scan direction	Gantry mode is bi-directional; portal scan mode is single-direction
Scanning speed	0.4 m/s (16 in/s) gantry, 3-8 kph portal mode
System throughput	Up to 20 trucks per hour in gantry mode, up to 100 trucks per hour in portal mode
Power requirements	50 Hz: 400 V, 63 A, 44 kVA 60 Hz: 220 V, 125 A, 48 kVA

SYSTEM DIMENSIONS AND SPECIFICATIONS

Width	8.7 m
Height	5.5 m
Length	3.6 m

TUNNEL DIMENSIONS

Width	4.7m
Height	4.8 m
Length	30 m rails; Scan object(s) up to 22 m in length at 0.4 m/s

MAXIMUM VEHICLE DIMENSIONS

Width	2.8 m
Height	4.6 m
Length	22 m

ENVIRONMENT

Operating temperature	-10° C to 40° C
-----------------------	-----------------

SYSTEM OPTIONS

- **Portal mode** : supports the drive-through scanning of traffic. Requires the purchase of traffic control and monitoring devices
- **CabScan® mode**: while in portal mode, safely scans the cab of the truck from front bumper to start of cargo
- **Integrated peripheral devices**: license/number plate recognition system, container code recognition system, and manifest scanner
- **Integrated radiation detection**: gamma or gamma/neutron
- **Extreme cold weather package**: extends the system operating temperature to -40° C
- **Extreme hot weather package**: extends the system operating temperature to +55° C

HTDS

Parc d'Activités du Moulin de Massy - 3 rue du Saule Trapu
BP246 - 91882 Massy Cedex France

Tel : +33 (0) 1 64 86 28 28 - Fax : +33 (0) 1 69 07 69 54 - info@htds.fr - www.htds.fr

HTDS Algeria: +213 232 384 01/02

HTDS Morocco: +212 222 749 59

HTDS Egypt: +202 229 053 06

HTDS Lybia: +218 91 69 50 70 8

HTDS Madagascar: +261 34 40 664 72

HTDS Tunisia: +216 70 836 961